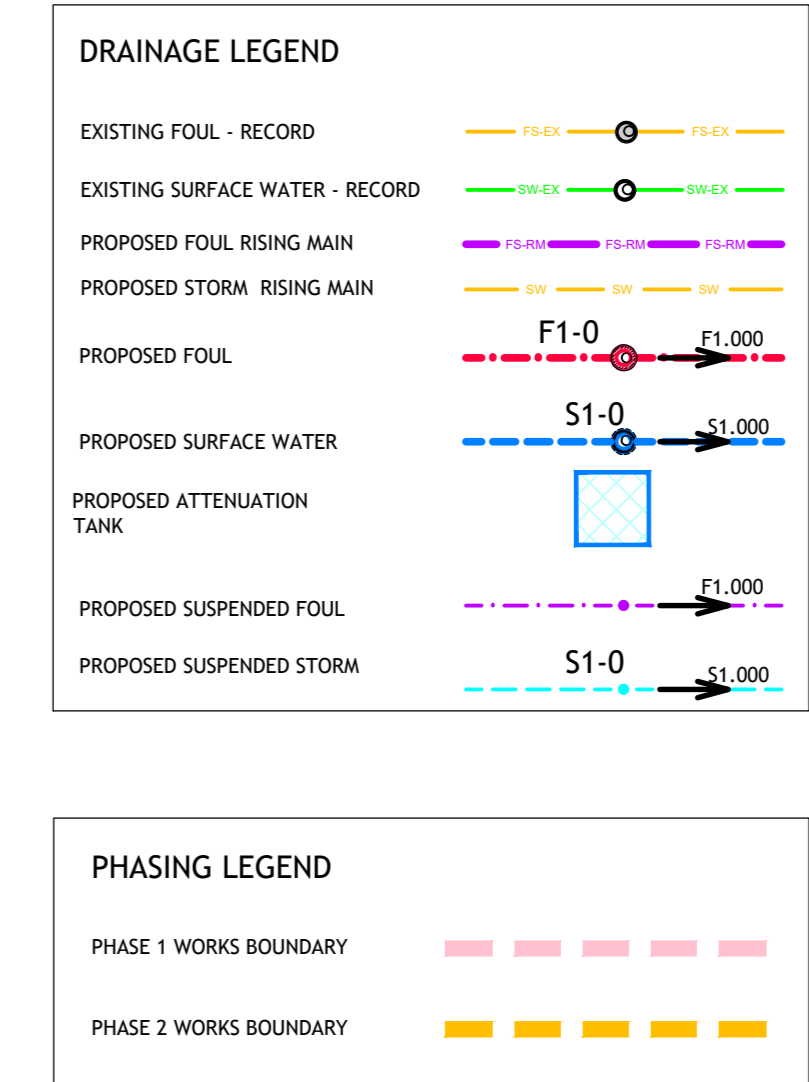


NOTE
PROPOSED DRAINAGE TO BE IN ACCORDANCE WITH THE IRISH WATER CODE OF PRACTICE

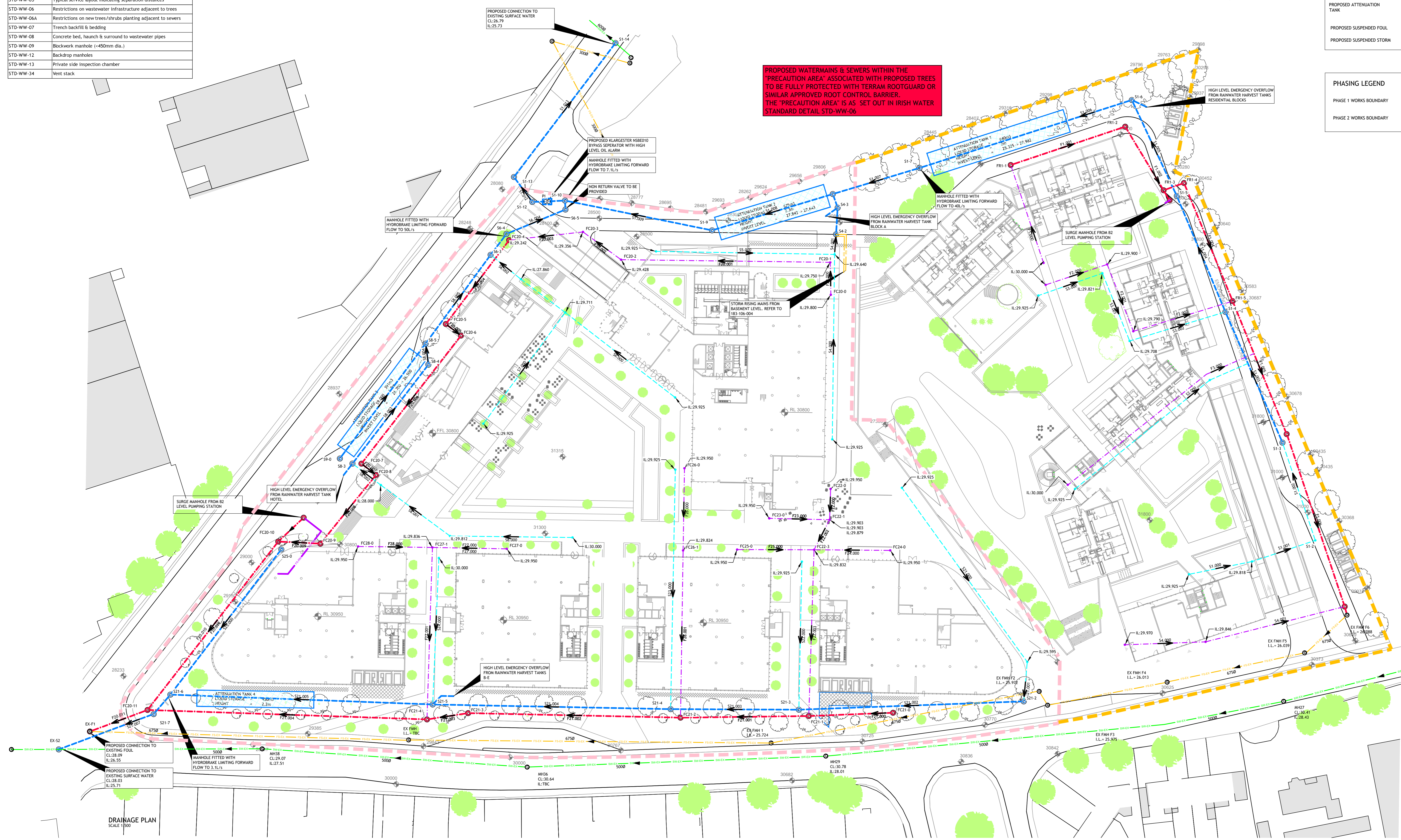
IRISH WATER WASTEWATER DETAILS

Drawing No.	Drawing Title
STD-WW-01	Waste water service connection responsibility
STD-WW-02	Typical layout for sewer within new developments
STD-WW-03	Drain & service connection pipework
STD-WW-04	Typical sewer / service pipe connection
STD-WW-05	Typical service layout indicating separation distances
STD-WW-06	Restrictions on wastewater infrastructure adjacent to trees
STD-WW-06A	Restrictions on new trees/shrubs planting adjacent to sewers
STD-WW-07	Trench backfill & bedding
STD-WW-08	Concrete bed, haunch & surround to wastewater pipes
STD-WW-09	Blockwork manhole (<450mm dia.)
STD-WW-12	Backsiphon manhole
STD-WW-13	Private side inspection chamber
STD-WW-14	Well stack



- SEWERS GENERAL:**
- ALL SEWERS SHALL COMPLY WITH SECTION 3.13 OF THE IRISH WATER WASTEWATER CODE OF PRACTICE AS DESCRIBED BELOW;
 - ALL FOUL SEWERS TO BE THERMOPLASTIC STRUCTURED WALL SEWER PIPE AND SHALL COMPLY WITH THE RELEVANT PROVISIONS OF WS 4-35-01, (I.E. POLYSEWER BY POLYPIPE CIVLS OR EQUIVALENT APPROVED)
 - GRAVITY SEWER PIPE MATERIAL TYPES, THE TYPES AND FITTINGS OUTLINED HEREIN SHALL BE USED IN THE CONSTRUCTION OF THE GRAVITY SEWERS. PIPE MATERIAL SHOULD NOT CHANGE BETWEEN MANHOLES. THE LOT BELOW DOES NOT APPLY TO PIPES INSTALLED BY PIPE JACKING OR MICRO TUNNELING
 - CONCRETE CONCRETE SEWER PIPES WITH SPIGOT AND SOCKET JOINTS AND RUBBER RING FITTINGS SHALL COMPLY WITH EN 1916 (2002), BS 5911 PART 1 (2002 - 2010) AND IS 4 (2004) OR EQUIVALENT STANDARDS. STIFFNESS CLASS 150 WITH MINIMUM CRUSHING LOADS IN ACCORDANCE WITH TABLE OF BS 5911 1 (2002 - 2010). ALL PIPES AND FITTINGS SHALL HAVE GASKET TYPE JOINTS OF SPIGOT AND SOCKET OR REBATED FORM (PIPE DIAMETERS 250mm AND ABOVE)
 - THERMOPLASTIC STRUCTURED WALL PIPES: THERMOPLASTIC STRUCTURED WALL PIPES SHALL COMPLY WITH THE PROVISIONS OF IS 8 (1994, 2007/2010). PIPES TO BE OF STIFFNESS CLASS BSN/A2 AND TO BE CAPABLE OF DEMONSTRATING A JETTING RESISTANCE OF 2.000 PSI (130 BAR) WITHOUT DAMAGE WHEN TESTED IN ACCORDANCE WITH SECTION 3.3 OF WS 4-35-01 (2008). SEWER DIAMETERS 150mm UP TO 450mm. SERVICE CONNECTIONS OF 100mm DIAMETER)
 - UNPLASTICISED PVC: UNPLASTICISED PVC PIPES AND FITTINGS SHALL COMPLY WITH THE PROVISIONS IS EN 1401 (2007/2012). PIPES TO BE APPLICATION AREA CODE "UP", STIFFNESS CLASS BSN/A2. PROVISION FOR JETTING SHALL BE BASED ON THE IRISH SEWER JETTING CODE OF PRACTICE - JUNE 1997. PIPES TO BE CAPABLE OF RESISTING A MAXIMUM JETTING PUMP PRESSURE OF 3.000PSI (180 BAR) WITHOUT DAMAGE. SEWER DIAMETERS 150mm UP TO 450mm. SERVICE CONNECTIONS OF 100mm DIAMETER)
 - OTHER: THE USE OF ALTERNATIVE PIPE TYPES AND MATERIALS WILL REQUIRE THE PRIOR WRITTEN AGREEMENT OF IRISH WATER.
 - ALL RISING MAINS SHALL COMPLY WITH SECTION 3.14 OF THE IRISH WATER WASTEWATER CODE OF PRACTICE

PROPOSED WATERMANS & SEWERS WITHIN THE 'PRECAUTION AREA' ASSOCIATED WITH PROPOSED TREES TO BE FULLY PROTECTED WITH TERRAM ROOTGUARD OR SIMILAR APPROVED ROOT CONTROL BARRIER. THE 'PRECAUTION AREA' IS AS SET OUT IN IRISH WATER STANDARD DETAIL STD-WW-06



DRAINAGE PLAN
SCALE: 1:500

Ordnance Survey Ireland Licence No EN 0003719
© Ordnance Survey Ireland/Government of Ireland